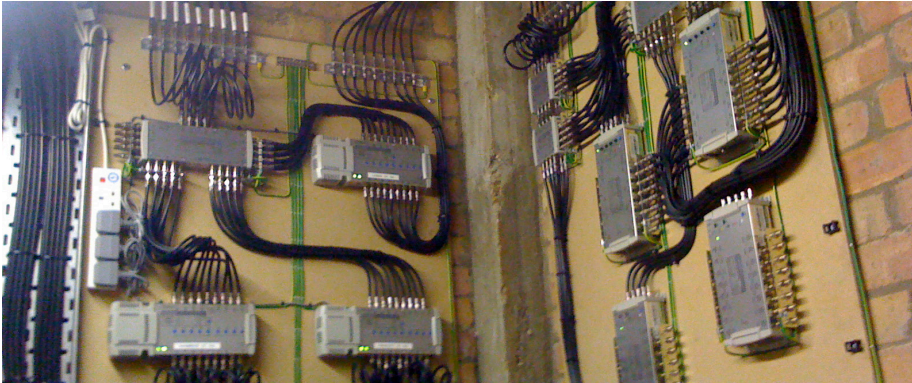




9 WIRE IRS SYSTEM



PROBLEM

Our client had a 25 year old MATV system that distributed analogue to 154 flats within their premises. Unfortunately, due to the age of the system, it was unable to carry a digital signal.

In addition to this issue, it was a listed building so there were additional planning restrictions, specifically that external cabling was not a viable option, on top of the restriction of the number of satellites that were allowed

to be installed. In these sorts of situations, it is usual for potential clients to find that they are told that there is no viable option for them to provide a digital feed on their existing communal television systems as no additional cabling can be introduced, either internally or externally, due to planning restrictions.

However, Satellite Services were able to overcome this problem on this and other buildings.



SOLUTION

In this instance, Satellite Services rewired all cabling which was accessible in the internal risers of the building, we then connected this cabling, using a 9 wire IRS distribution system to the existing cabling which were unable to replace. This enabled digital reception to all 154 flats for ASTRA2, Hotbird, DTT Crystal Palace, DAB and FM radio all on a single coaxial cable.

With the existing cable and the new IRS system implemented, we checked every flat, and overall only 20% didn't work initially. Once, we had identified those

that needed additional works, we were able to rectify the individual problems in each of those flats.

Although this solved the problem of receiving the digital signal, there was still the problem of enabling the flats to receive SKY+ due to its requirement of needing two feeds. This was overcome by either employing an SCR (Single Channel Router) which allows two or three feeds on a single wire. Or, we used a Stacker kit which allows two signals to run concurrently on a single cable.

